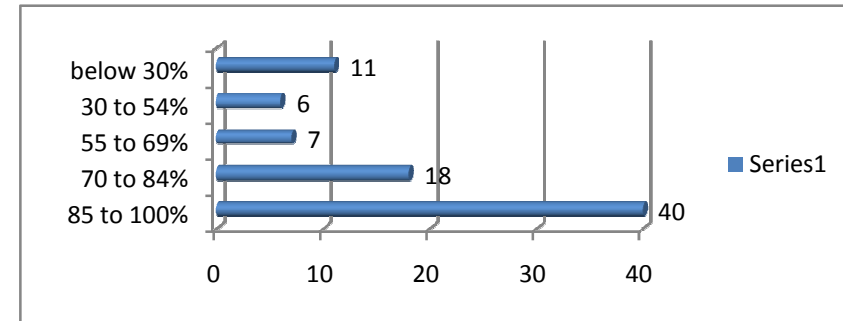


82  
RESPO  
NSES

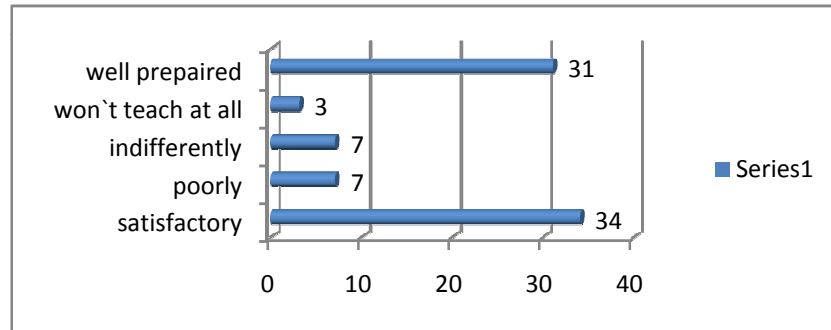
# STUDENT SATISFATION SURVEY(2019- 20)

(Computer & Science Department)

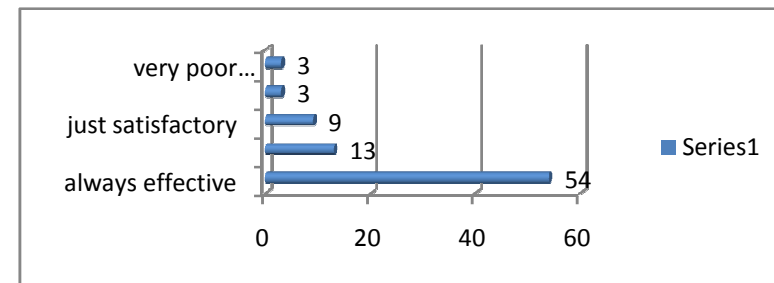
Rank	1. how much of the syllabus was covered in the class?	
4	85 to 100%	40
3	70 to 84%	18
2	55 to 69%	7
1	30 to 54%	6
0	below 30%	11



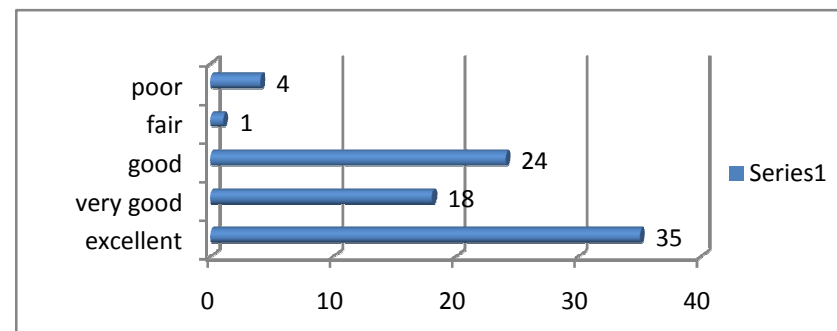
Rank	2. how well did the teachers prepare for the classes?	
4	satisfactory	34
3	poorly	7
2	indifferently	7
1	won't teach at all	3
0	well prepared	31



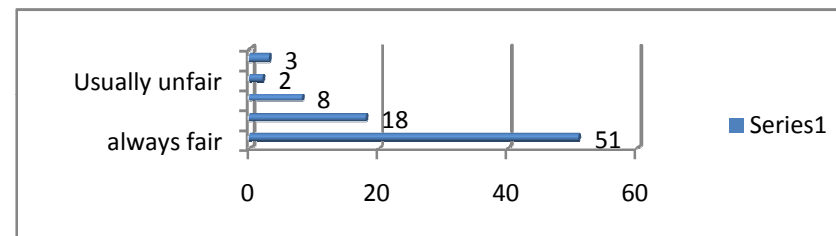
Rank	3. how well were the teachers able to communicate?	
4	always effective	54
3	sometimes effective	13
2	just satisfactory	9
1	generally ineffective	3
0	very poor communication	3



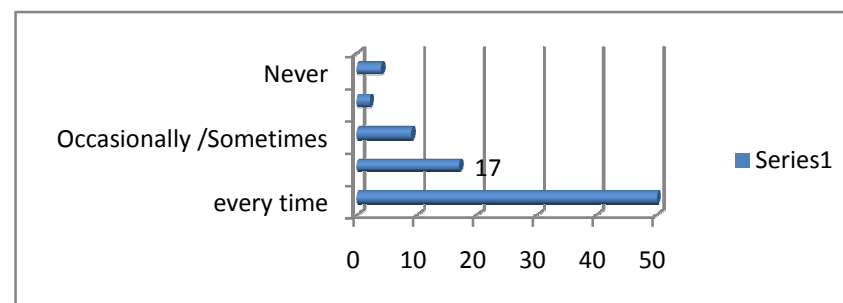
Rank	4. the teachers approach to teaching can best be	
4	excellent	35
3	very good	18
2	good	24
1	fair	1
0	poor	4



Rank	5. Fairness of the internal evaluation process by the tea	
4	always fair	51
3	usually fair	18
2	Sometimes unfair	8
1	Usually unfair	2
0	Unfair	3



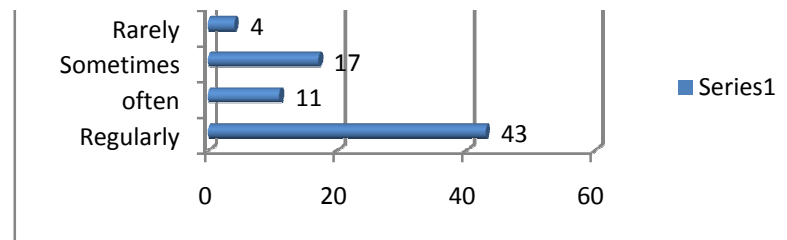
Rank	6. was your performance in assignment discussed with you?	
4	every time	50
3	usually	17
2	Occasionally /Sometimes	9
1	Rarely	2
0	Never	4



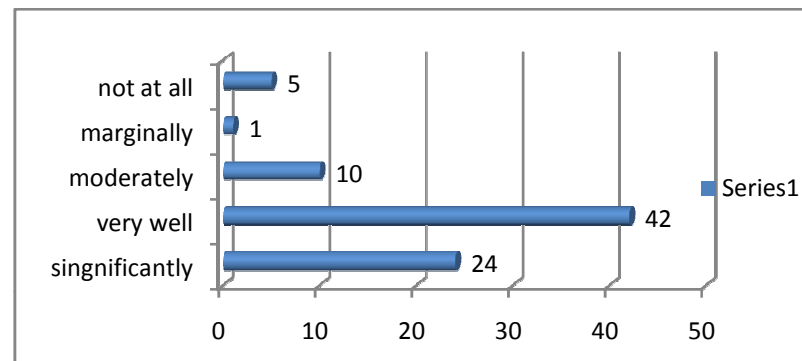
Rank	7. The institute takes active interest in promoting intership, student exchange ,student exchange , field visit oppotunitisties for students.	
0	never	7



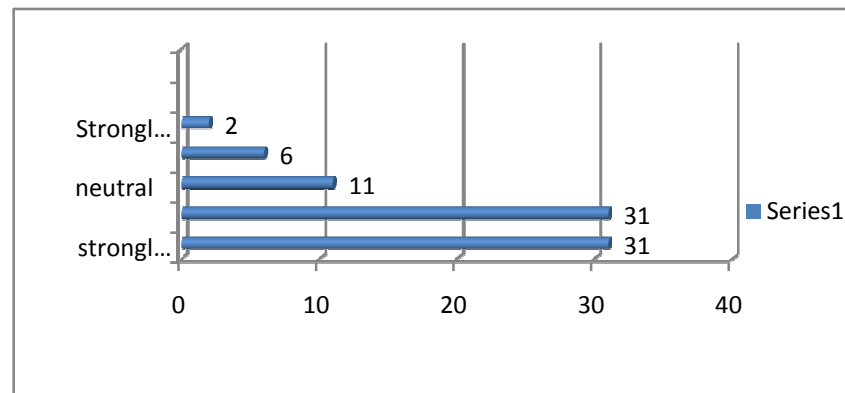
4	Regularly	43
3	often	11
2	Sometimes	17
1	Rarely	4
0	never	7



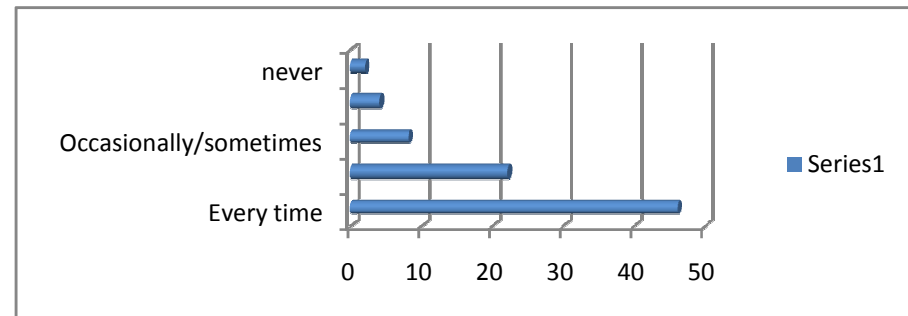
Rank	8. the teaching and mentoring process in your institution facilitates you in cognitive ,social and	
4	singnificantly	24
3	very well	42
2	moderately	10
1	marginally	1
0	not at all	5



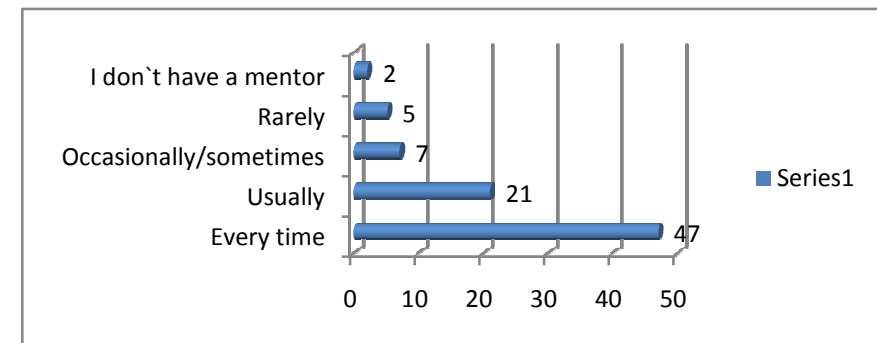
Rank	9. The institution provides multiple opportunities to learn and grow.	
4	strongly agree	31
3	agree	31
2	neutral	11
1	Disagree	6
0	Strongly disagree	2



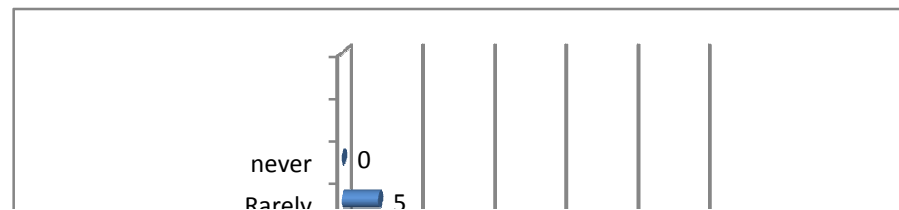
Rank	10. Teachers inform you about your expected competencies ,course outcomes and programme outcomes.	
4	Every time	46
3	Usually	22
2	Occasionally/sometimes	8
1	Rarely	4
0	never	2



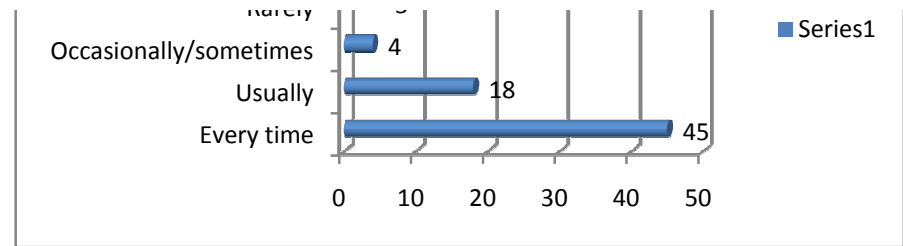
Rank	11. your mentor does a necessary follow-up with an assigned task to you.	
4	Every time	47
3	Usually	21
2	Occasionally/sometimes	7
1	Rarely	5
0	I don't have a mentor	2



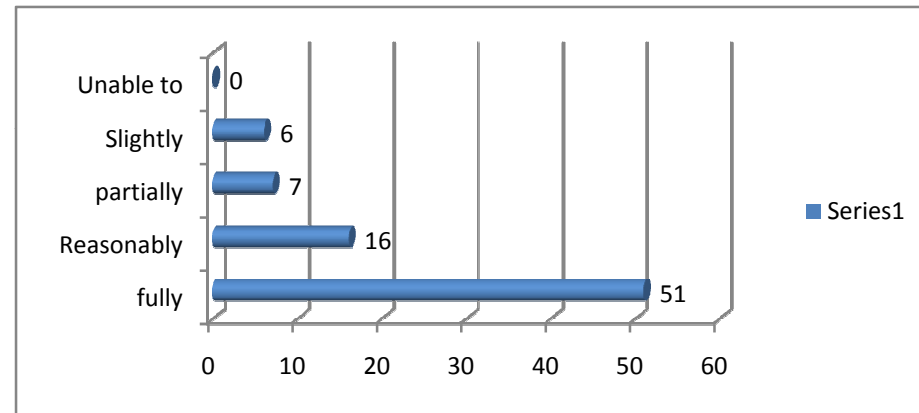
Rank	12. The teachers illustrate the concepts through examples and applications.	
4	Every time	45
3	Usually	18
2	Occasionally/sometimes	4



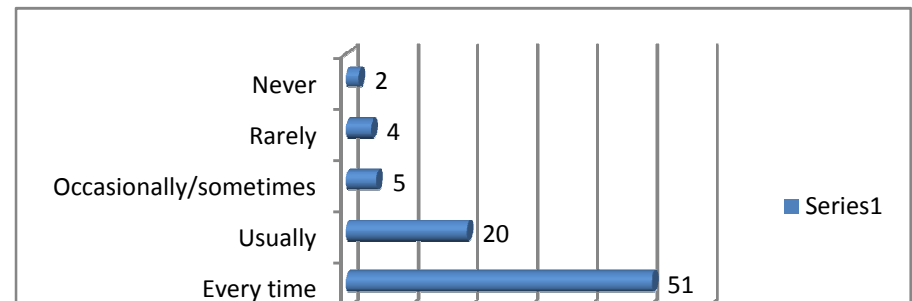
1	Rarely	5
0	never	0

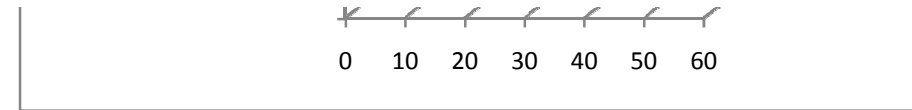


Rank	13. The teachers identify your strengths and encourage you with providing right level of challenges .	
4	fully	51
3	Reasonably	16
2	partially	7
1	Slightly	6
0	Unable to	0

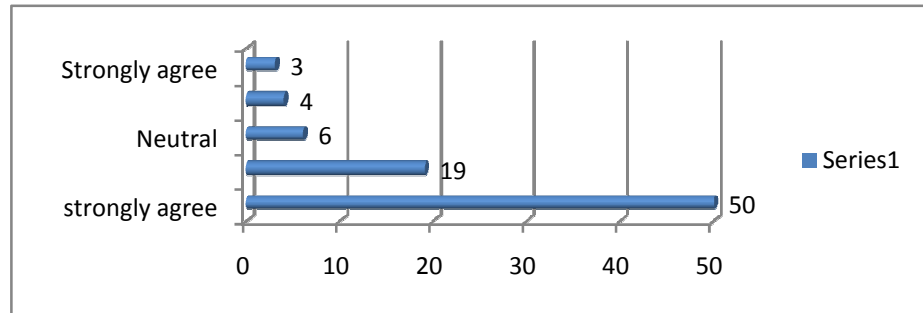


Rank	14. Teachers are able to identify your weaknesses and help you to overcome them.	
4	Every time	51
3	Usually	20
2	Occasionally/sometimes	5
1	Rarely	4
0	Never	2

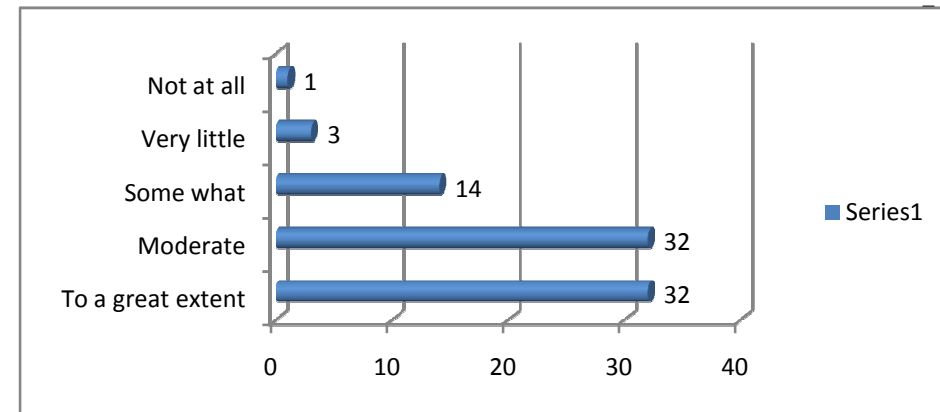




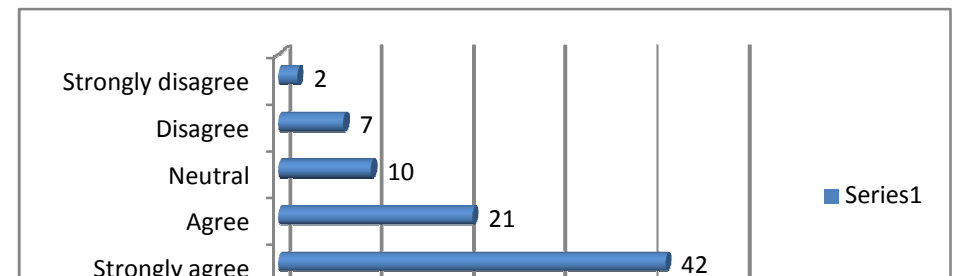
Rank	15. The institution makes effort to engage students in the monitoring , review and continuous quality	
4	strongly agree	50
3	Agree	19
2	Neutral	6
1	Disagree	4
0	Strongly agree	3



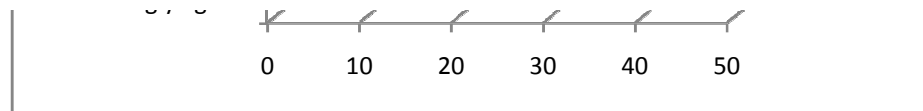
Rank	16. The institute/teachers use student centric methods, such as experiential learning , participative learning and problem solving methodologies for	
4	To a great extent	32
3	Moderate	32
2	Some what	14
1	Very little	3
0	Not at all	1



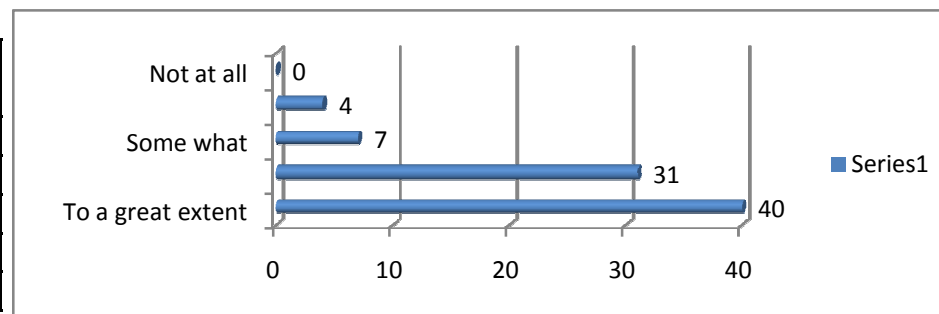
Rank	17. Teachers encourage you to participate in extracurricular activities.	
4	Strongly agree	42
3	Agree	21
2	Neutral	10
1	Disagree	7



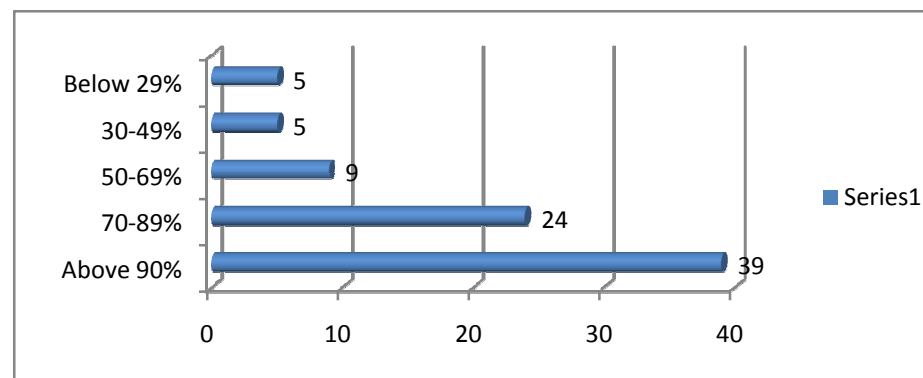
0	Strongly disagree	2
---	-------------------	---



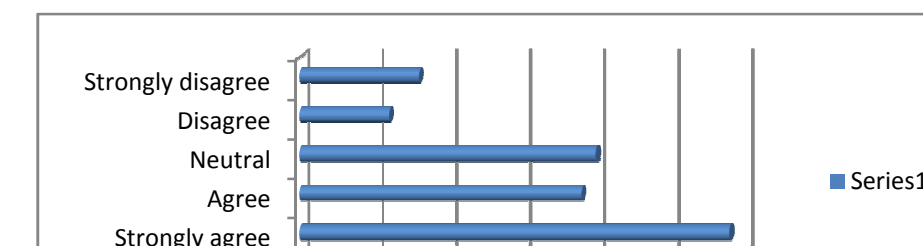
Rank	18. Efforts are made by the institute/teacher to inculcate soft skills, life skills and employability skills	
4	To a great extent	40
3	Moderate	31
2	Some what	7
1	very little	4
0	Not at all	0



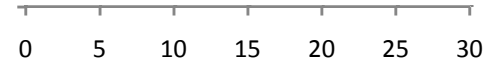
Rank	19. what percentage of teachers use ICT tools such as LCD projector ,multimedia ,ect. while teaching.	
4	Above 90%	39
3	70-89%	24
2	50-69%	9
1	30-49%	5
0	Below 29%	5



Rank	20 . the overall quality of teaching-learning process in your institute is very good.	
4	Strongly agree	29
3	Agree	19
2	Neutral	20
1	Disagree	6



0	Strongly disagree	8
---	-------------------	---















]

]

|

|

1