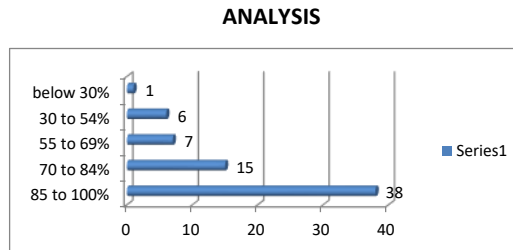


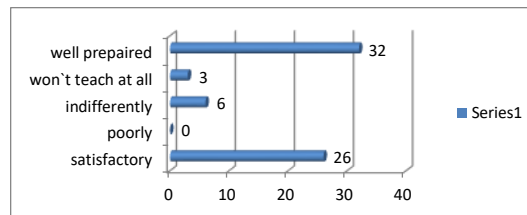
**STUDENT SATISFATION  
SURVEY(2017-18)  
(computer & Science Department)**

67 RESPONSES

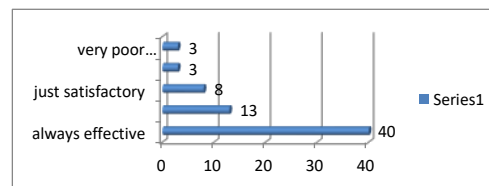
Rank	1. how much of the syllabus was covered in the class?	
4	85 to 100%	38
3	70 to 84%	15
2	55 to 69%	7
1	30 to 54%	6
0	below 30%	1



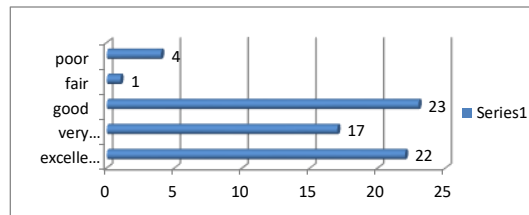
Rank	2. how well did the teachers prepare for the classes?	
4	satisfactory	26
3	poorly	0
2	indifferently	6
1	won't teach at all	3
0	well prepared	32



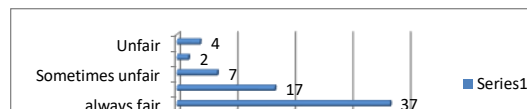
Rank	3. how well were the teachers able to communicate?	
4	always effective	40
3	sometimes effective	13
2	just satisfactory	8
1	generally ineffective	3
0	very poor communication	3



Rank	4. the teachers approach to teaching can best be	
4	excellent	22
3	very good	17
2	good	23
1	fair	1
0	poor	4



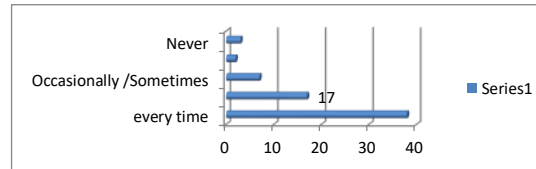
Rank	5. Fairness of the internal evaluation process by the tead	
4	always fair	37
3	usually fair	17
2	Sometimes unfair	7



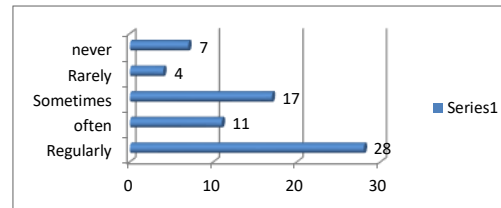
1	Usually unfair	2
0	Unfair	4



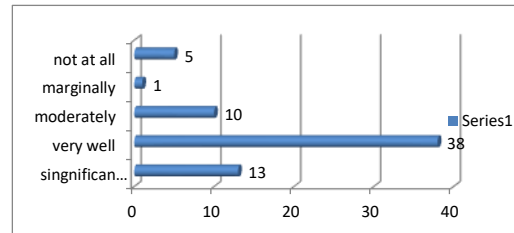
Rank	6. was your performance in assignment discussed with	
4	every time	38
3	usually	17
2	Occasionally /Sometimes	7
1	Rarely	2
0	Never	3



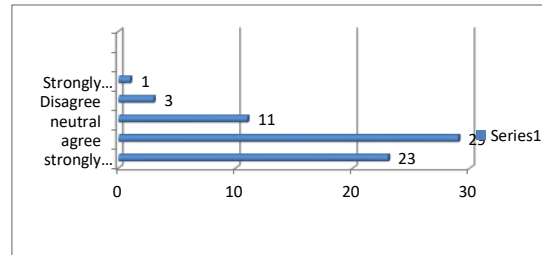
Rank	7. The institute takes active interest in promoting intership, student exchange ,student exchange , field visit oppotunities for students.	
4	Regularly	28
3	often	11
2	Sometimes	17
1	Rarely	4
0	never	7



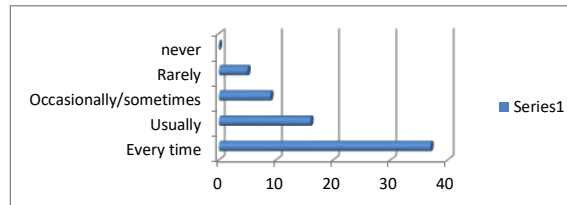
Rank	8. the teaching and mentoring process in your institution facilitates you in cognitive ,social and	
4	singnificantly	13
3	very well	38
2	moderately	10
1	marginally	1
0	not at all	5



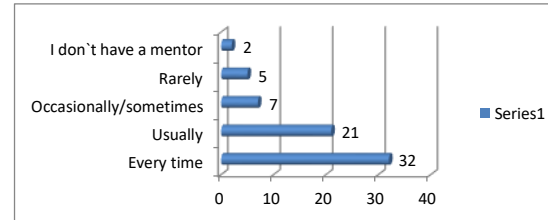
Rank	9. The institution provides multiple opportunities to learn and grow.	
4	strongly agree	23
3	agree	29
2	neutral	11
1	Disagree	3
0	Strongly disagree	1



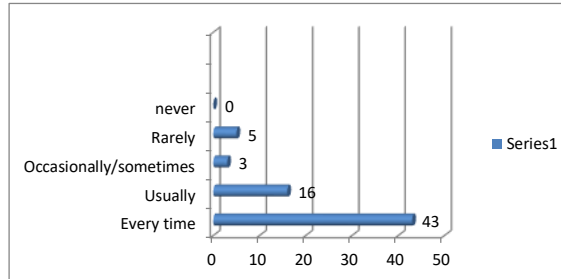
Rank	10. Teachers inform you about your expected competencies ,course outcomes and programme outcomes.	
4	Every time	37
3	Usually	16
2	Occasionally/sometimes	9
1	Rarely	5
0	never	0



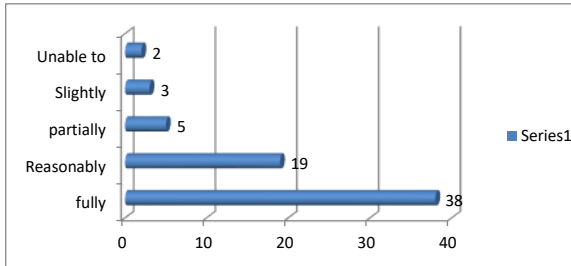
Rank	11. your mentor does a necessary follow-up with an assigned task to you.	
4	Every time	32
3	Usually	21
2	Occasionally/sometimes	7
1	Rarely	5
0	I don't have a mentor	2



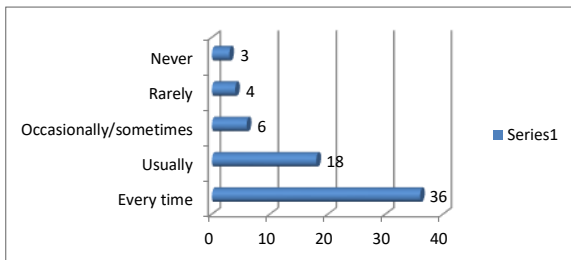
Rank	12. The teachers illustrate the concepts through examples and applications.	
4	Every time	43
3	Usually	16
2	Occasionally/sometimes	3
1	Rarely	5
0	never	0



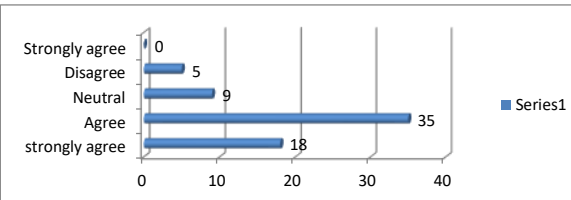
Rank	13. The teachers identify your strengths and encourage you with providing right level of challenges .	
4	fully	38
3	Reasonably	19
2	partially	5
1	Slightly	3
0	Unable to	2



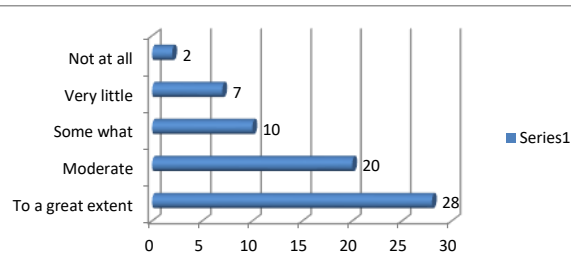
Rank	14. Teachers are able to identify your weaknesses and help you to overcome them.	
4	Every time	36
3	Usually	18
2	Occasionally/sometimes	6
1	Rarely	4
0	Never	3



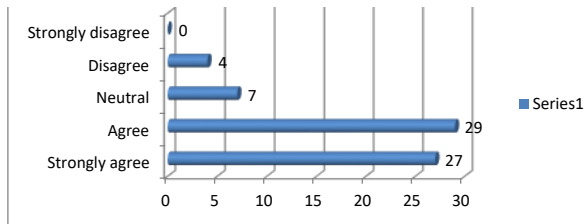
Rank	15. The institution makes effort to engage students in the monitoring , review and continuous quality	
4	strongly agree	18
3	Agree	35
2	Neutral	9
1	Disagree	5
0	Strongly agree	0



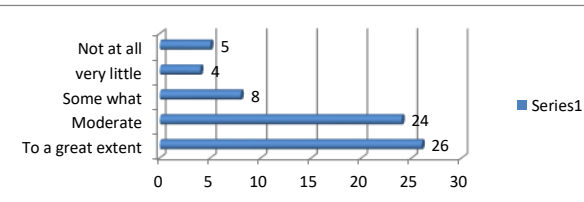
Rank	16. The institute/teachers use student centric methods, such as experiential learning , participative learning and problem solving methodologies for enhancing learning	
4	To a great extent	28
3	Moderate	20
2	Some what	10
1	Very little	7
0	Not at all	2



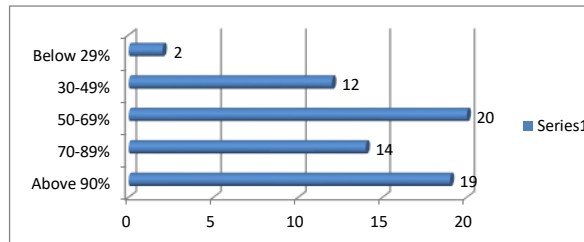
Rank	17. Teachers encourage you to participate in extracurricular activities.	
4	Strongly agree	27
3	Agree	29
2	Neutral	7
1	Disagree	4
0	Strongly disagree	0



Rank	18. Efforts are made by the institute/teacher to inculcate soft skills, life skills and employability skills to make	
4	To a great extent	26
3	Moderate	24
2	Some what	8
1	very little	4
0	Not at all	5



Rank	19. what percentage of teachers use ICT tools such as LCD projector ,multimedia ,ect. while teaching.	
4	Above 90%	19
3	70-89%	14
2	50-69%	20
1	30-49%	12
0	Below 29%	2



Rank	20 . the overall quality of teaching-learning process in your institute is very good.	
4	Strongly agree	29
3	Agree	27
2	Neutral	7
1	Disagree	4
0	Strongly disagree	0

