

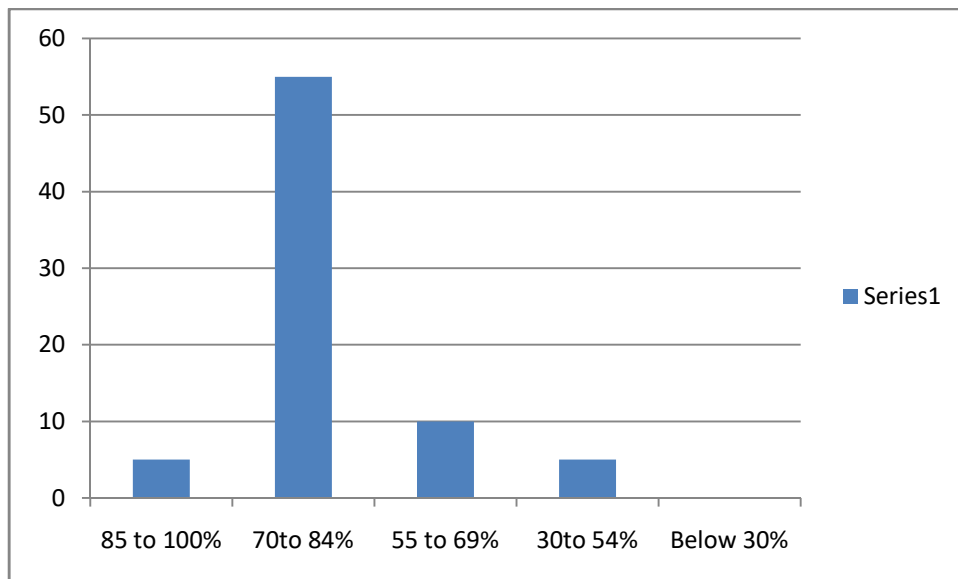
**Student Satisfaction Survey of Education Department,  
Vipra Arts, Commerce & Physical Education College, Raipur, Chhattisgarh  
Session 2018-19**

Total Enrolled Students: 100

Survey form filled by: 75

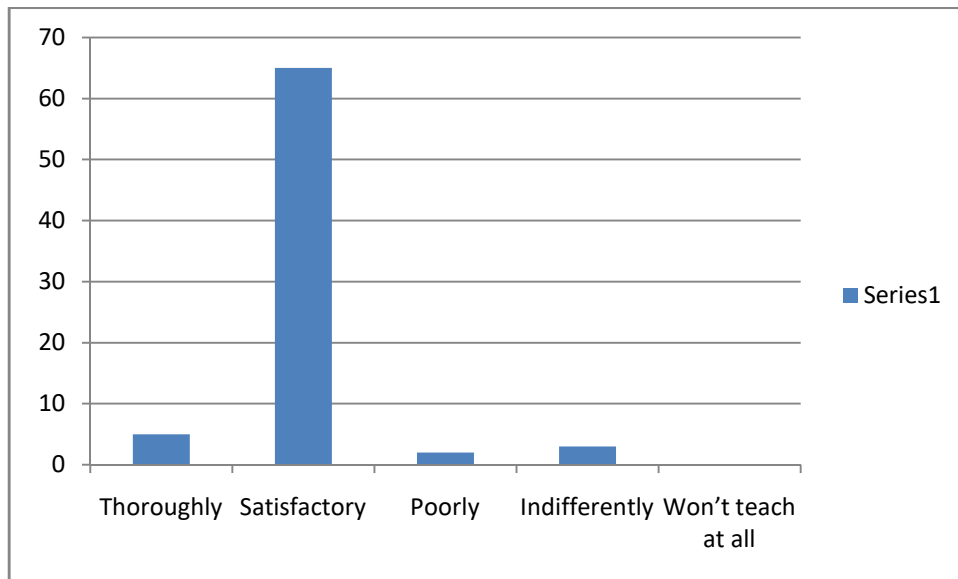
Q1: How much of the syllabus was covered in the class?

Ranking	Scale	Respond of the Students
4	85 to 100%	05
3	70to 84%	55
2	55 to 69%	10
1	30to 54%	05
0	Below 30%	00



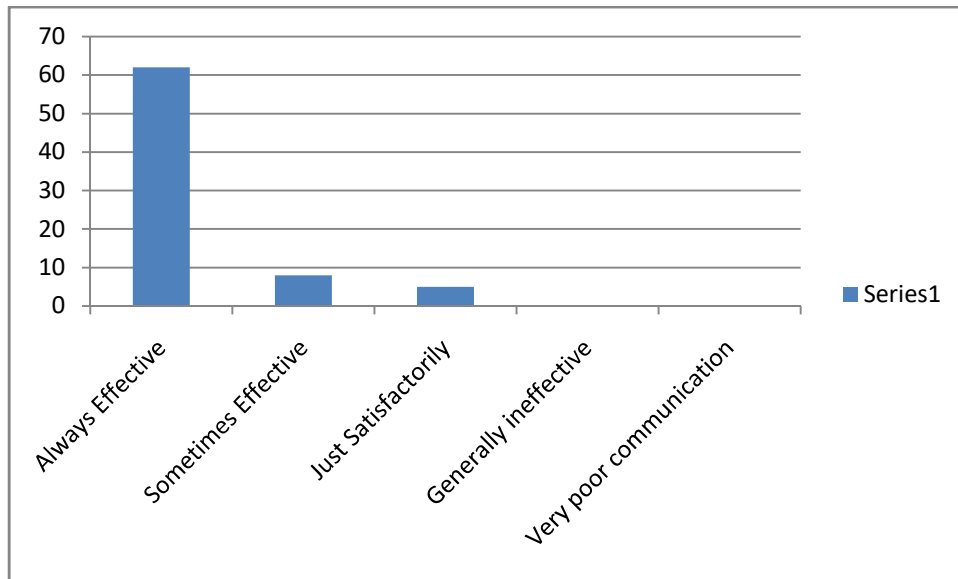
Q2: How well did the teachers prepare for the classes?

Ranking	Scale	Respond of the Students
4	Thoroughly	05
3	Satisfactory	65
2	Poorly	02
1	Indifferently	03
0	Won't teach at all	00



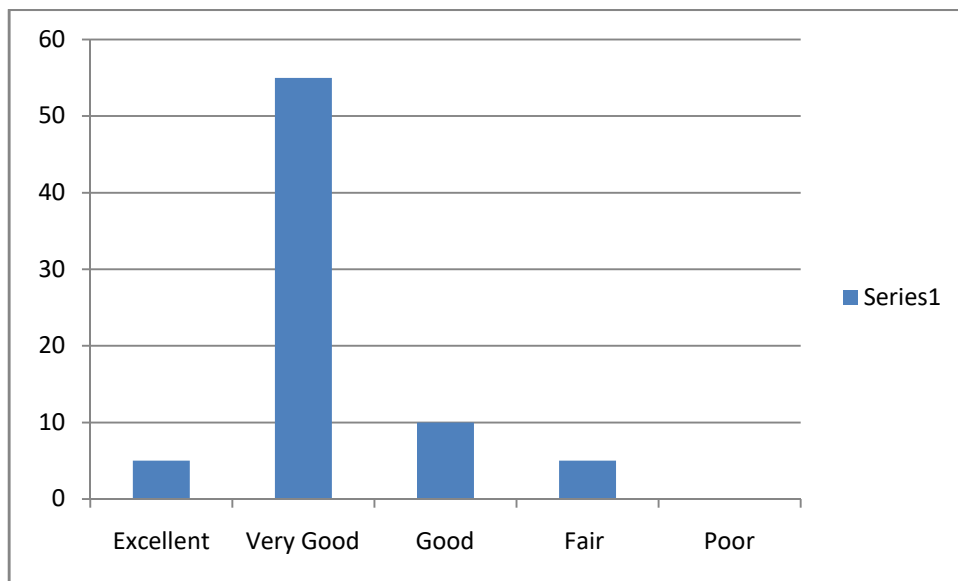
Q3: How well were the teachers able to communicate?

Ranking	Scale	Respond of the Students
4	Always Effective	62
3	Sometimes Effective	08
2	Just Satisfactorily	05
1	Generally ineffective	00
0	Very poor communication	00



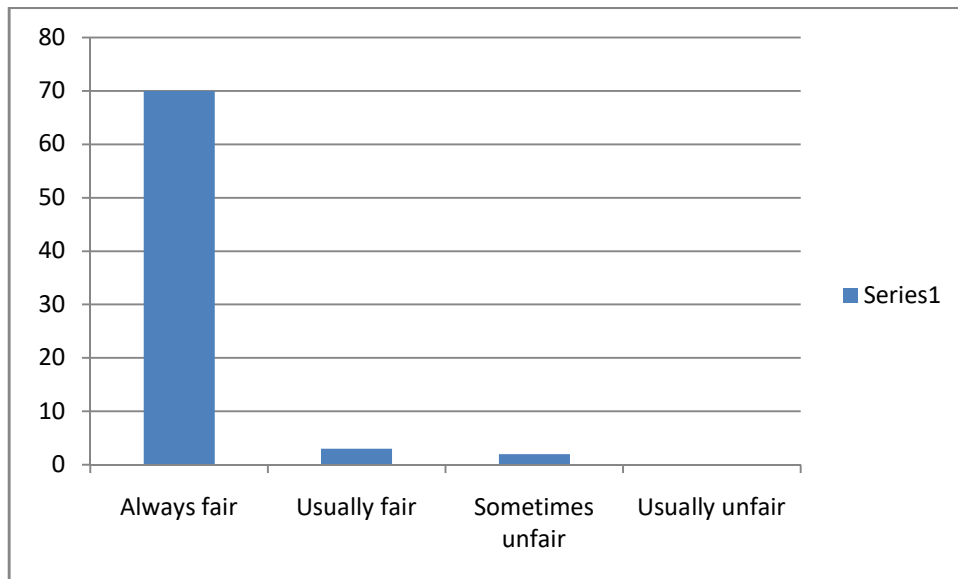
Q 4: The teacher's approach to teaching can best be described as

Ranking	Scale	Respond of the Students
4	Excellent	05
3	Very Good	55
2	Good	10
1	Fair	05
0	Poor	00



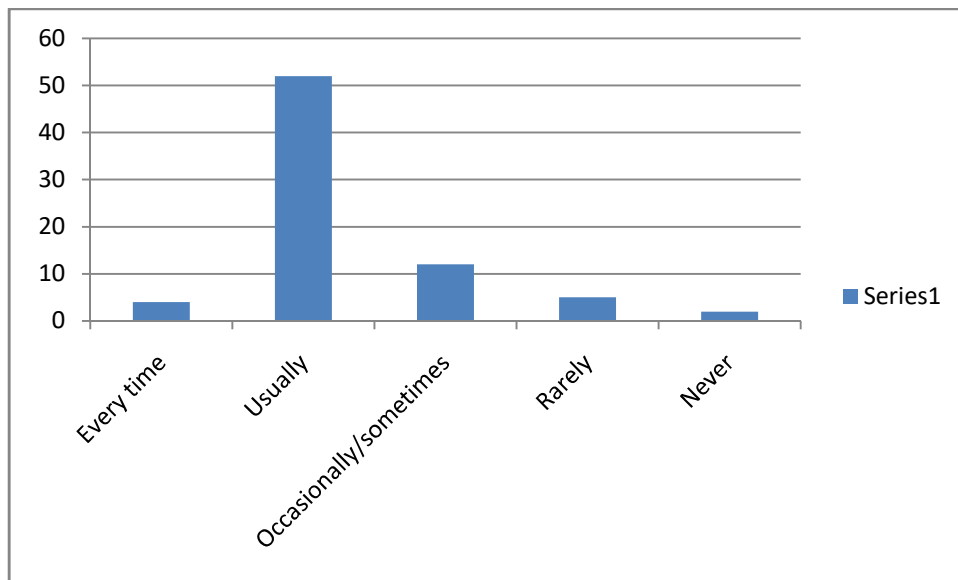
**Q 5: Fairness of the internal evaluation process by the teachers.**

<b>Ranking</b>	<b>Scale</b>	<b>Respond of the Students</b>
4	Always fair	70
3	Usually fair	03
2	Sometimes unfair	02
1	Usually unfair	00
0	Unfair	00



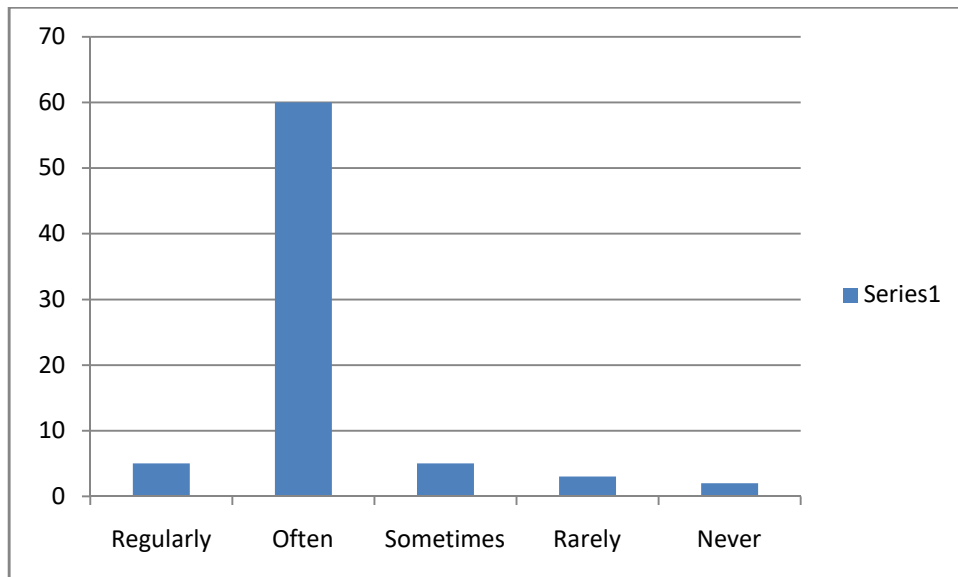
**Q 6: Was your performance in assignments discusses with you?**

<b>Ranking</b>	<b>Scale</b>	<b>Respond of the Students</b>
4	Every time	04
3	Usually	52
2	Occasionally/sometimes	12
1	Rarely	05
0	Never	02



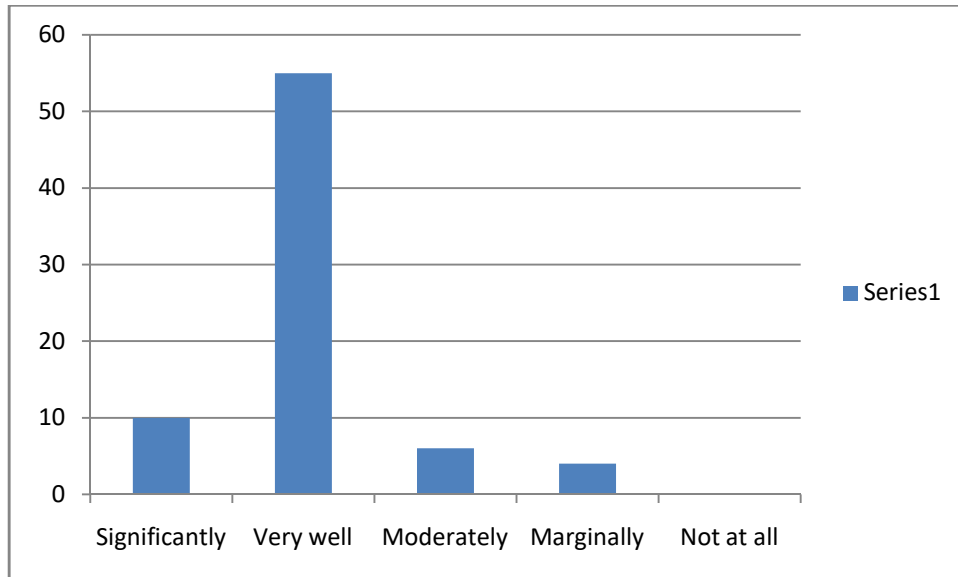
Q7: The institute takes active interest in promoting internship, student exchange and field visit opportunities for students.

Ranking	Scale	Respond of the Students
4	Regularly	05
3	Often	60
2	Sometimes	05
1	Rarely	03
0	Never	02



Q 8: The teaching and mentoring process in your institution facilitates you in cognitive, social and emotional growth.

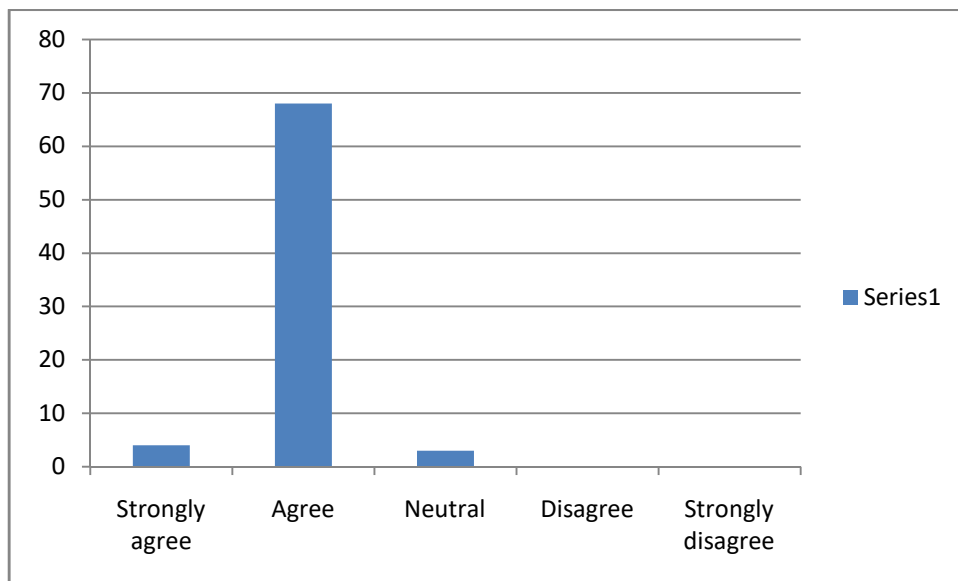
Ranking	Scale	Respond of the Students
4	Significantly	10
3	Very well	55
2	Moderately	06
1	Marginally	04
0	Not at all	00





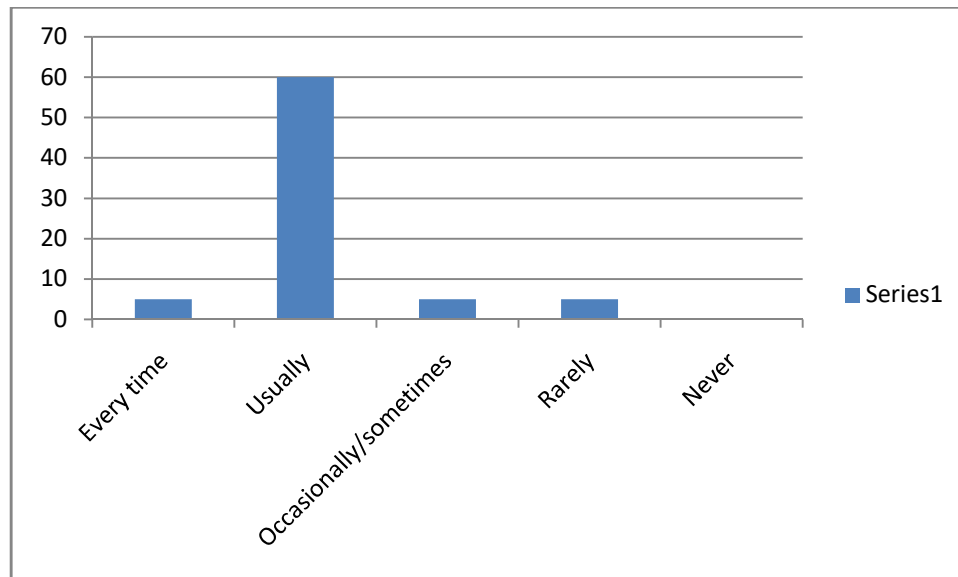
Q 9: The institution provides multiple opportunities to learn and grow.

Ranking	Scale	Respond of the Students
4	Strongly agree	04
3	Agree	68
2	Neutral	03
1	Disagree	00
0	Strongly disagree	00



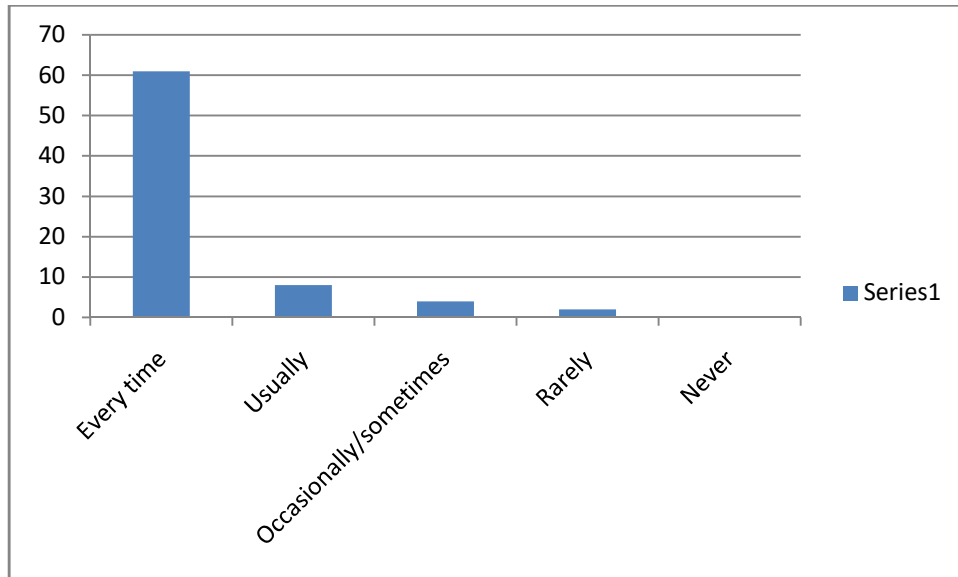
Q10: Teachers inform you about your expected competencies, course outcomes and programme outcomes.

Ranking	Scale	Respond of the Students
4	Every time	05
3	Usually	60
2	Occasionally/sometimes	05
1	Rarely	05
0	Never	00



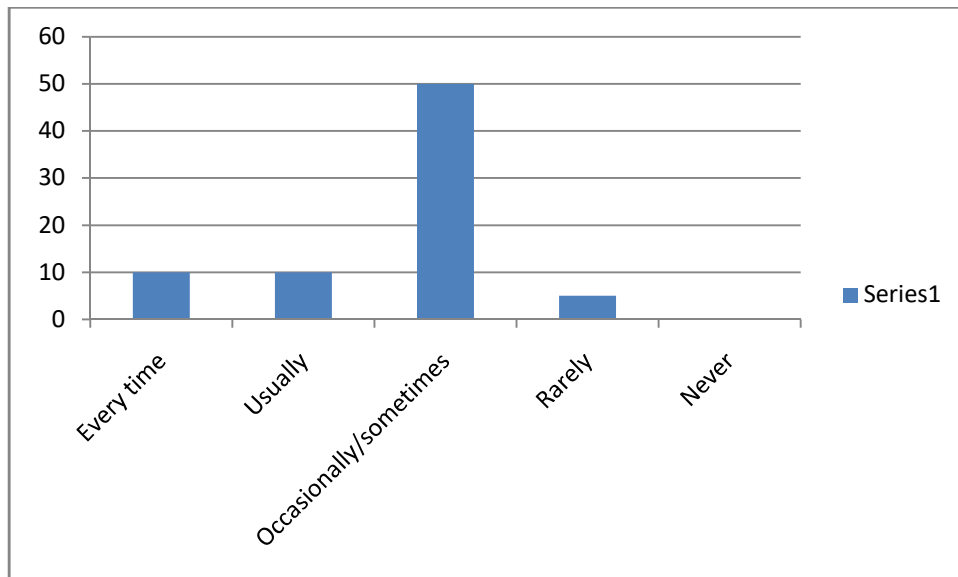
Q11: Your mentor does a necessary follow-up with an assigned task to you.

Ranking	Scale	Respond of the Students
4	Every time	61
3	Usually	08
2	Occasionally/sometimes	04
1	Rarely	02
0	Never	00



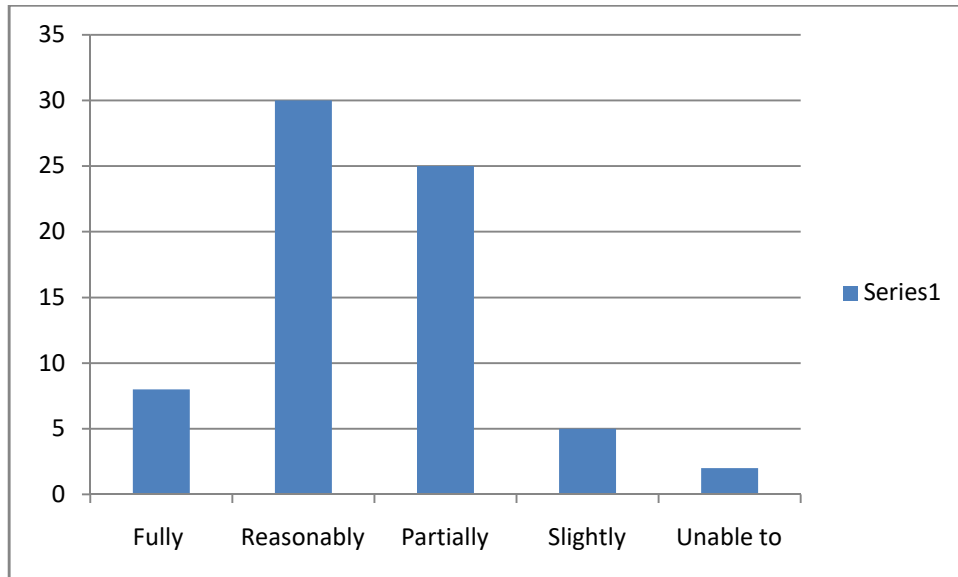
Q 12: The teachers illustrate the concepts through examples and applications.

Ranking	Scale	Respond of the Students
4	Every time	10
3	Usually	10
2	Occasionally/sometimes	50
1	Rarely	05
0	Never	00



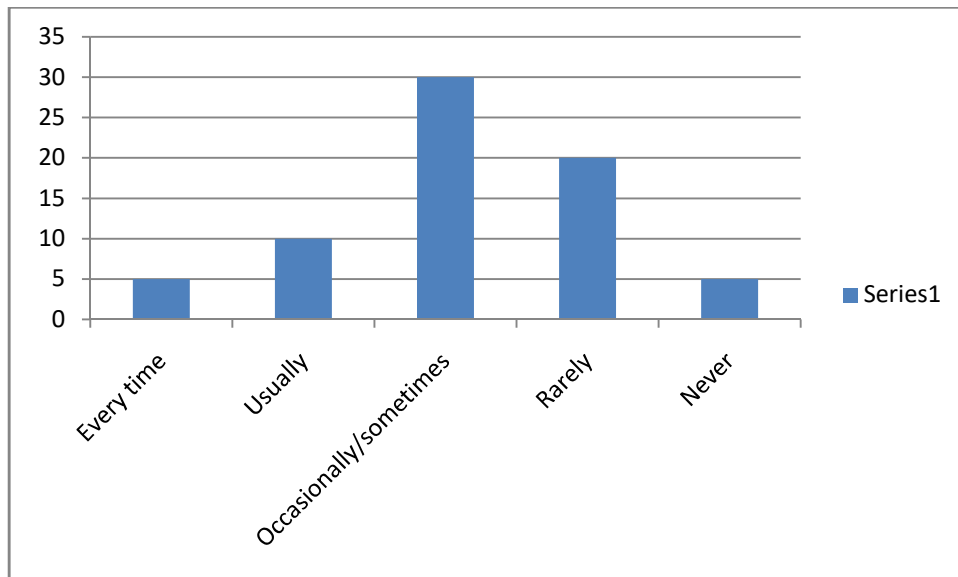
Q 13: The Teachers identify your strengths and encourage you with providing right level of challenges.

Ranking	Scale	Respond of the Students
4	Fully	08
3	Reasonably	30
2	Partially	25
1	Slightly	05
0	Unable to	02



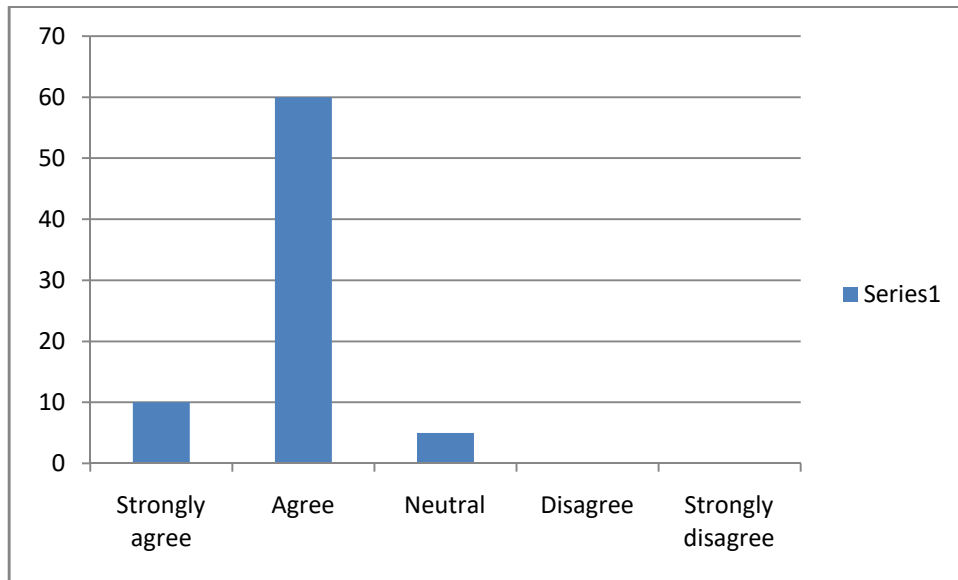
Q 14: Teachers are able to identify your weakness and help you to overcome them

Ranking	Scale	Respond of the Students
4	Every time	05
3	Usually	10
2	Occasionally/sometimes	30
1	Rarely	20
0	Never	05



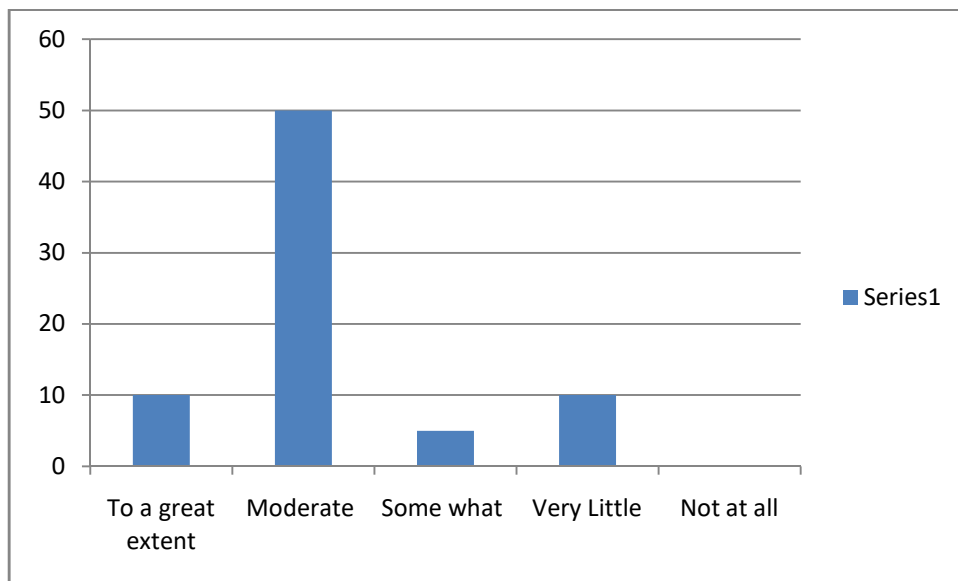
Q 15: The institution makes effort to engage students in the monitoring, review and continuous quality improvement of the teaching learning process.

Ranking	Scale	Respond of the Students
4	Strongly agree	10
3	Agree	60
2	Neutral	05
1	Disagree	00
0	Strongly disagree	00



Q 16: The institute/teachers use student centric methods, such as experiential learning, participative learning and problem solving methodologies for enhancing learning experiences.

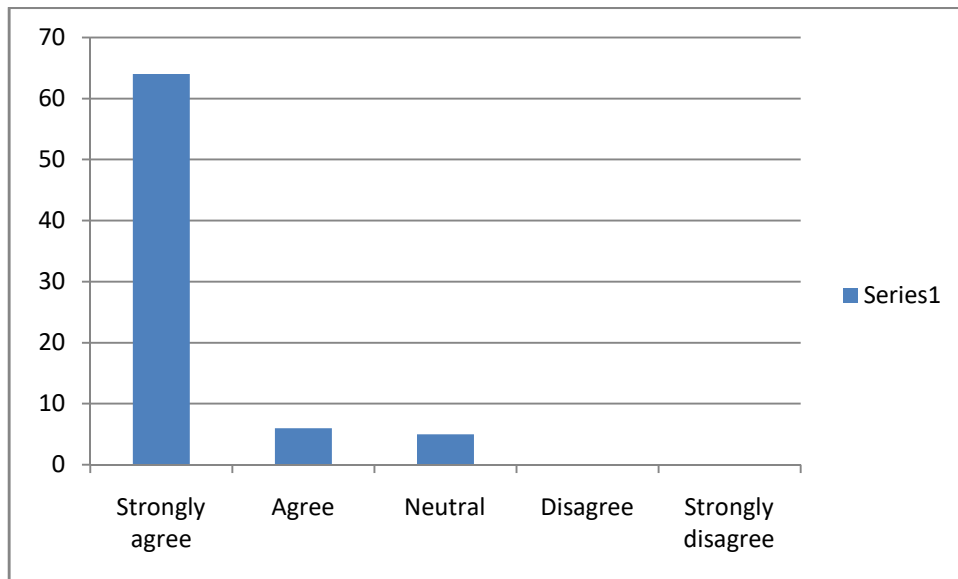
Ranking	Scale	Respond of the Students
4	To a great extent	10
3	Moderate	50
2	Some what	05
1	Very Little	10
0	Not at all	00





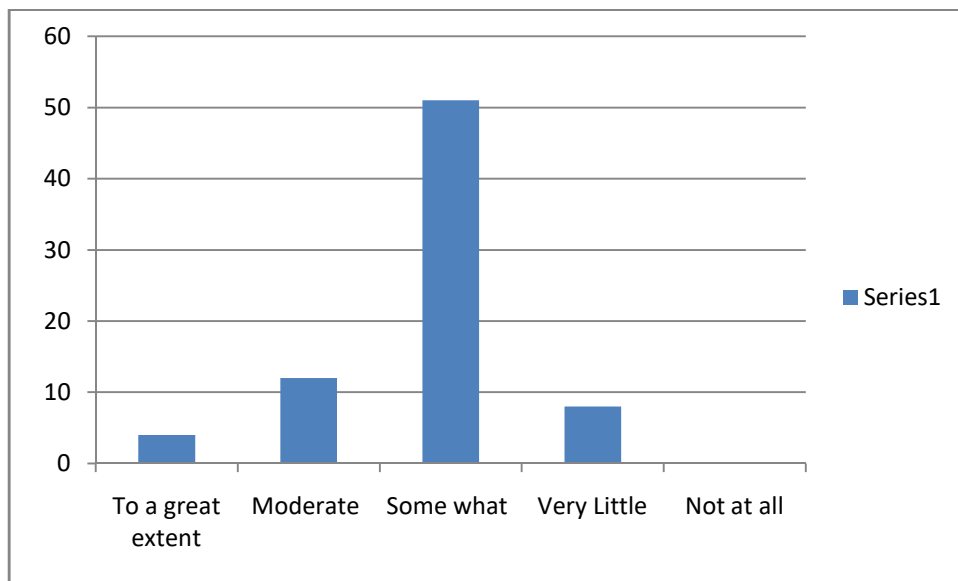
Q 17: Teachers encourage you to participate in extracurricular activities.

Ranking	Scale	Respond of the Students
4	Strongly agree	64
3	Agree	06
2	Neutral	05
1	Disagree	00
0	Strongly disagree	00



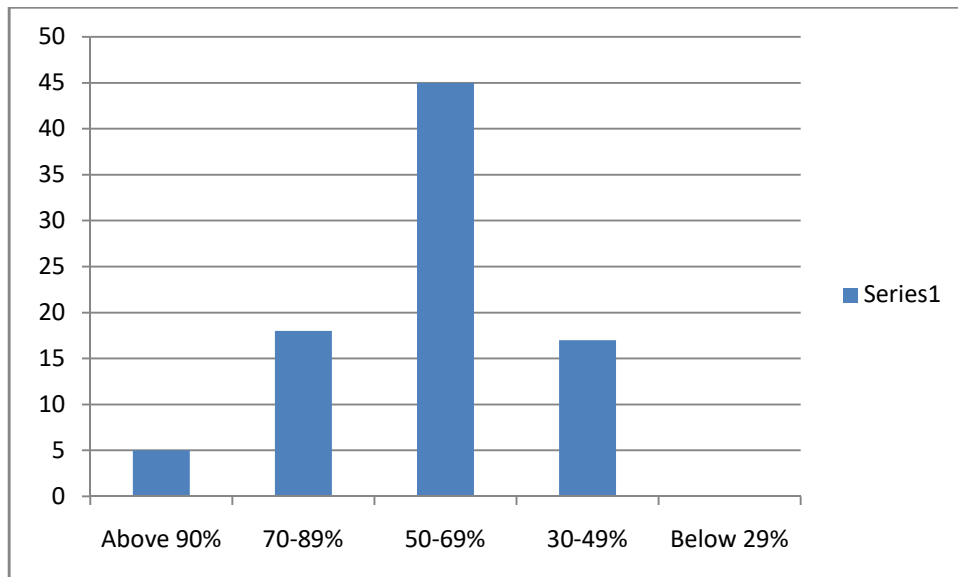
Q 18: Efforts are made by the institute /teachers to inculcate soft skills, life skills and employability skills to make you ready for the world of work.

Ranking	Scale	Respond of the Students
4	To a great extent	04
3	Moderate	12
2	Some what	51
1	Very Little	08
0	Not at all	00



Q 19: What percentage of teachers use ICT tools such as LCD projector, Multimedia, etc, while teaching.

Ranking	Scale	Respond of the Students
4	Above 90%	05
3	70-89%	18
2	50-69%	45
1	30-49%	17
0	Below 29%	00



Q 20: The Overall quality of teaching-learning process in your institute is very good.

Ranking	Scale	Respond of the Students
4	Strongly agree	07
3	Agree	58
2	Neutral	08
1	Disagree	02
0	Strongly disagree	00

