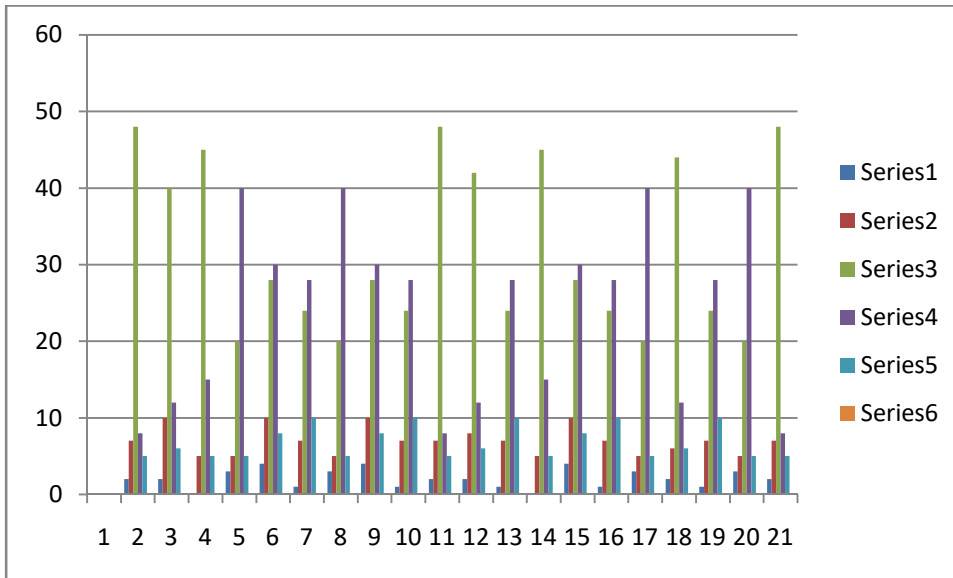


Student Satisfaction Survey during the Session 2019-20

Conducted by Department of Education (As per the format of NAAC)

| S.N. | Question | Not Satisfied | Satisfied | Good | Very Good | Excellent |
|------|--|---------------|-----------|------|-----------|-----------|
| 1. | How much of the syllabus was covered in the class? | 2 | 7 | 48 | 8 | 5 |
| 2. | How well did the teachers prepare for the classes? | 2 | 10 | 40 | 12 | 6 |
| 3. | How well were the teachers able to communicate? | 0 | 5 | 45 | 15 | 5 |
| 4. | The teacher's approach to teaching can best be described as | 3 | 5 | 20 | 40 | 5 |
| 5. | Fairness of the internal evaluation process by the teachers. | 4 | 10 | 28 | 30 | 8 |
| 6. | Was your performance in assignments discussed with you? | 1 | 7 | 24 | 28 | 10 |
| 7. | The institute takes active interest in promoting internship, student exchange, field visit opportunities for students. | 3 | 5 | 20 | 40 | 5 |
| 8. | The teaching and mentoring process in your institution facilitates you in cognitive, social and emotional growth. | 4 | 10 | 28 | 30 | 8 |
| 9. | The institution provides multiple opportunities to learn and grow. | 1 | 7 | 24 | 28 | 10 |
| 10. | Teachers inform you about your expected competencies, course outcomes and programme outcomes. | 2 | 7 | 48 | 8 | 5 |
| 11. | Your mentor does a necessary follow-up with an assigned task to you. | 2 | 8 | 42 | 12 | 6 |
| 12. | The teachers illustrate the concepts through examples and applications. | 1 | 7 | 24 | 28 | 10 |
| 13. | The teachers identify your strengths and encourage you with providing right level of challenges. | 0 | 5 | 45 | 15 | 5 |
| 14. | Teachers are able to identify your weaknesses and help you to overcome them. | 4 | 10 | 28 | 30 | 8 |
| 15. | The institution makes effort to engage students in the monitoring, review and continuous quality improvement of the teaching learning process. | 1 | 7 | 24 | 28 | 10 |
| 16. | The institute/ teachers use student centric methods, such as experiential learning, participative learning and problem solving methodologies for enhancing learning experiences. | 3 | 5 | 20 | 40 | 5 |
| 17. | Teachers encourage you to participate in extracurricular activities. | 2 | 6 | 44 | 12 | 6 |
| 18. | Efforts are made by the institute/ teachers to inculcate soft skills, life skills and employability skills to make you ready for the world of work. | 1 | 7 | 24 | 28 | 10 |
| 19. | What percentage of teachers use ICT tools such as LCD projector, Multimedia, etc. while teaching. | 3 | 5 | 20 | 40 | 5 |
| 20. | The overall quality of teaching-learning process in your institute is very good. | 2 | 7 | 48 | 8 | 5 |



The Department of Education, Vipra Arts, Commerce and Physical Education College has conducted **student satisfaction survey** as per the guideline of **NAAC** during the session 2019-20. 70 teacher trainees from the department participated in the survey. The responses of the trainees were analyzed and presented in the tabular form and graph. Against each item i.e. statement trainees had put their opinion and majority of the responses were being found between the range of **good and very good**.