

STUDENT SATISFATION

SURVEY(2019-20)

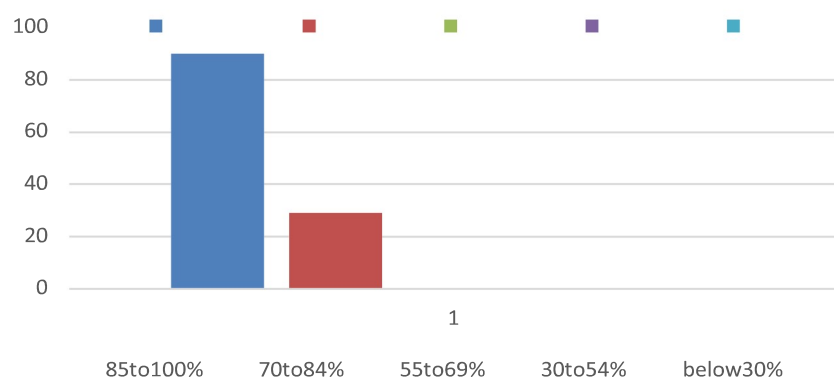
(Commerce Department)

354

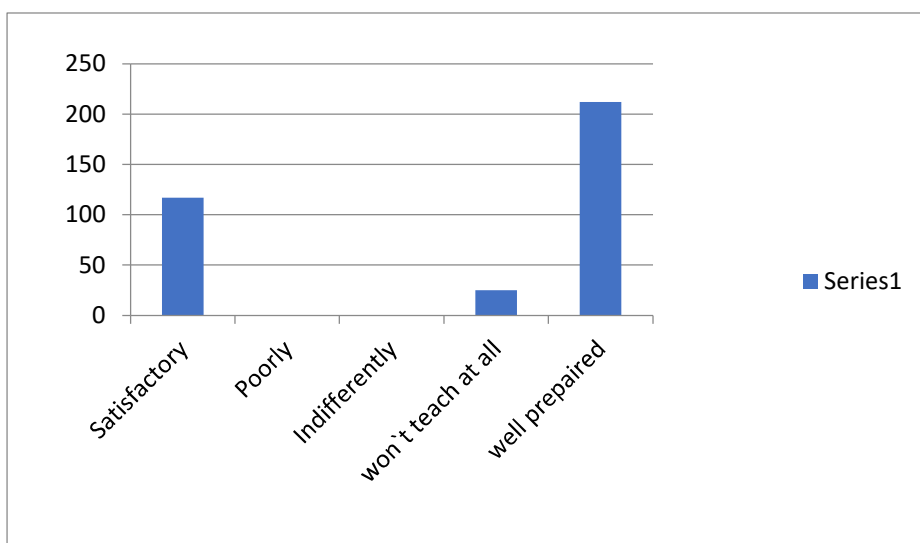
RESPONSE

1.how much of the syllabus was covered in the class ?	
85to100%	287
70to84%	67
55to69%	-
30to54%	-
below30%	-

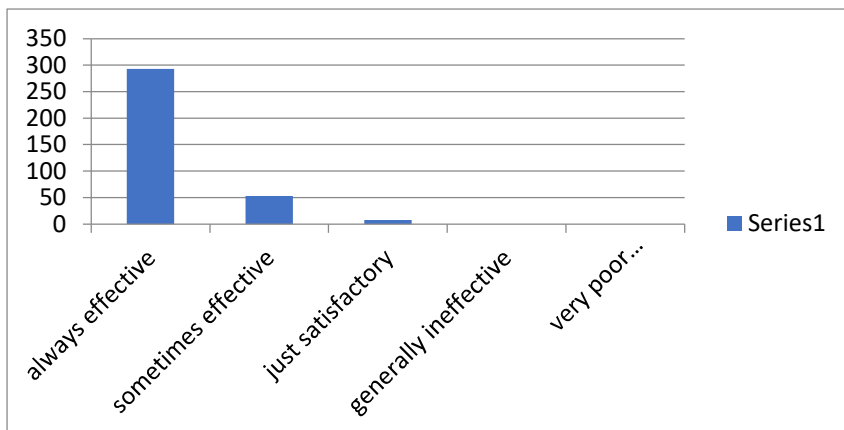
how much of the syllabus was covered in the class?



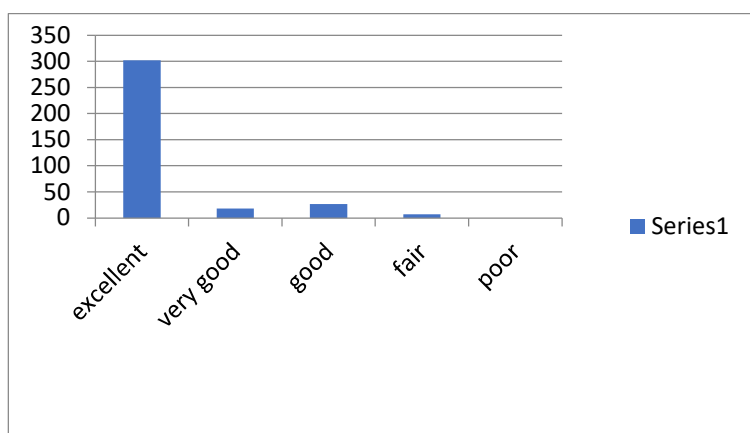
2.how well did the teachers prepare for the classes?	
Satisfactory	117
Poorly	-
Indifferently	-
won`tteachatall	25
Wellprepared	212



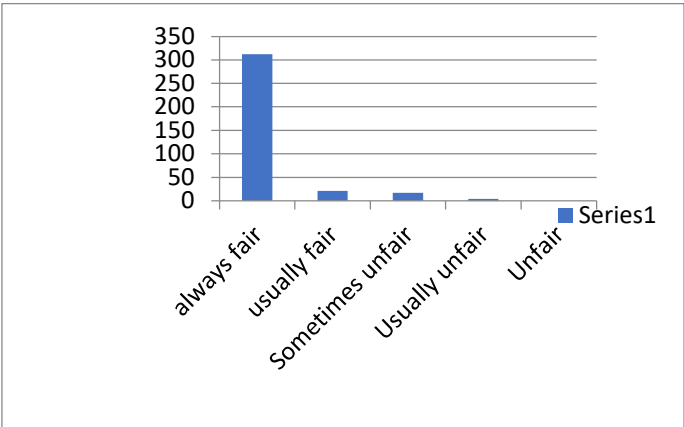
3.how well were the teachers able to communicate?	
always effective	293
sometimes effective	53
just satisfactory	8
generally ineffective	-
very poor communication	-



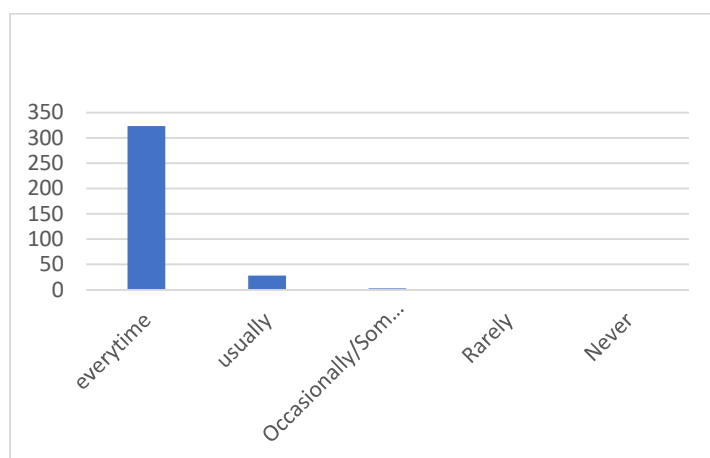
4.The teachers approach to teaching can best be	
Excellent	302
Verygood	18
Good	27
Fair	7
Poor	-



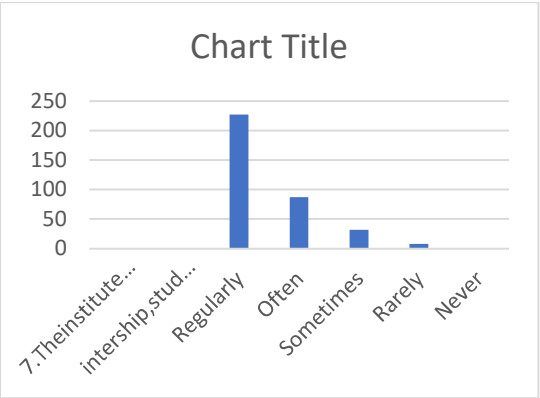
5.Fairness of the internal evaluation process by the teacher	
alwaysfair	312
usuallyfair	21
Sometimesunfair	17
Usuallyunfair	4
Unfair	-



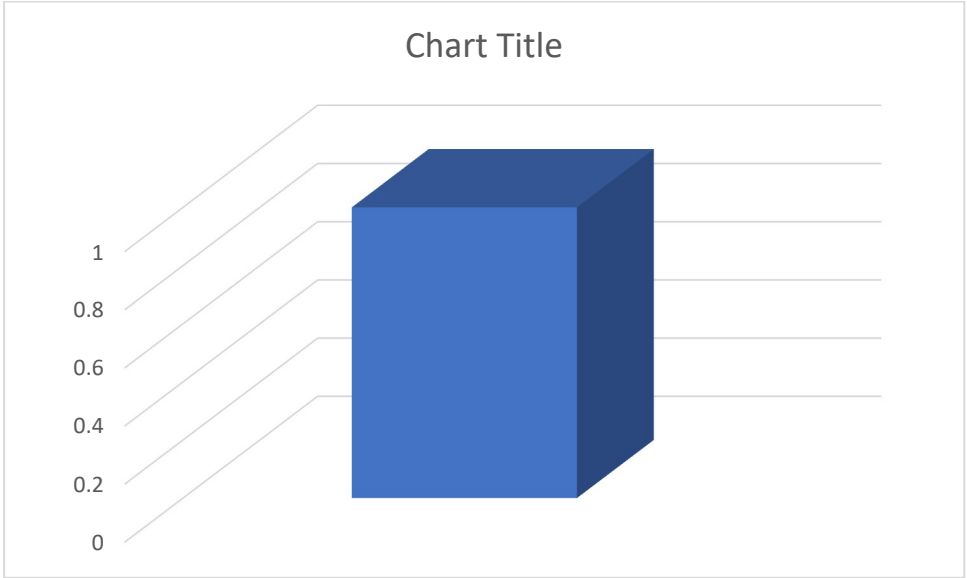
6.Was your performance in assignment discussed with	
everytime	323
usually	28
Occasionally/Sometimes	3
Rarely	-
Never	-



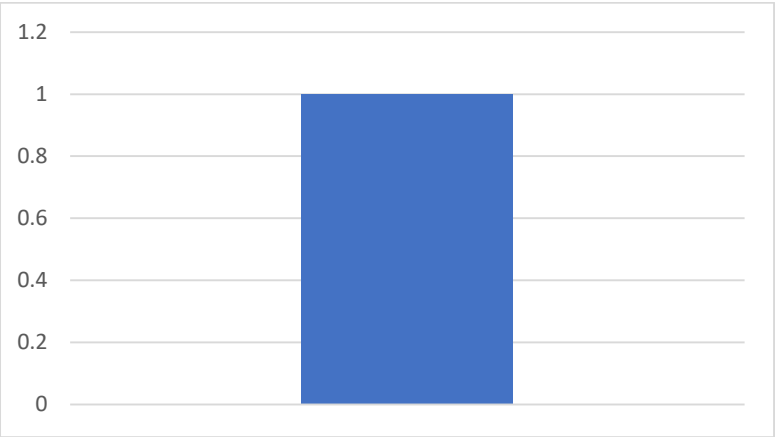
7.Theinstitutetakesactiveinterestinpromoting internship,studentexchange,studentexchange,fieldvisitopp otunitisties forstudents.	
Regularly	227
Often	87
Sometimes	32
Rarely	8
Never	



8.the teaching and mentoring process in your institution facilitates you in cognitive, social and emotional growth.	
Singnificantly	224
very well	72
Moderately	58
Marginally	
not at all	



9. The institution provides multiple opportunities to learn and grow.	
strongly agree	305
agree	30
neutral	19
Disagree	-
Strongly disagree	-

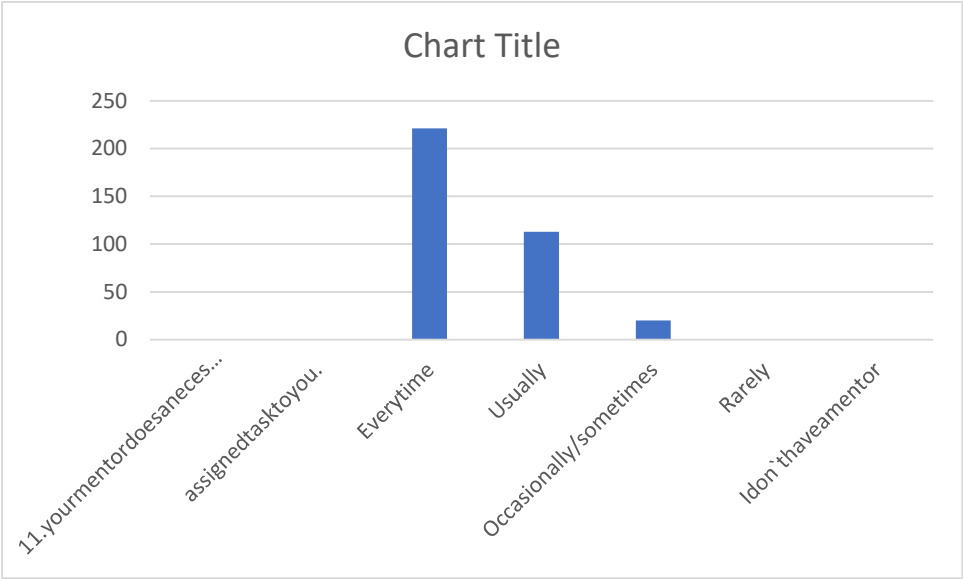


10. Teachers inform you about your expected competencies, course outcomes and programme outcomes.	
Everytime	250
Usually	83
Occasionally/sometimes	21
Rarely	-
never	-

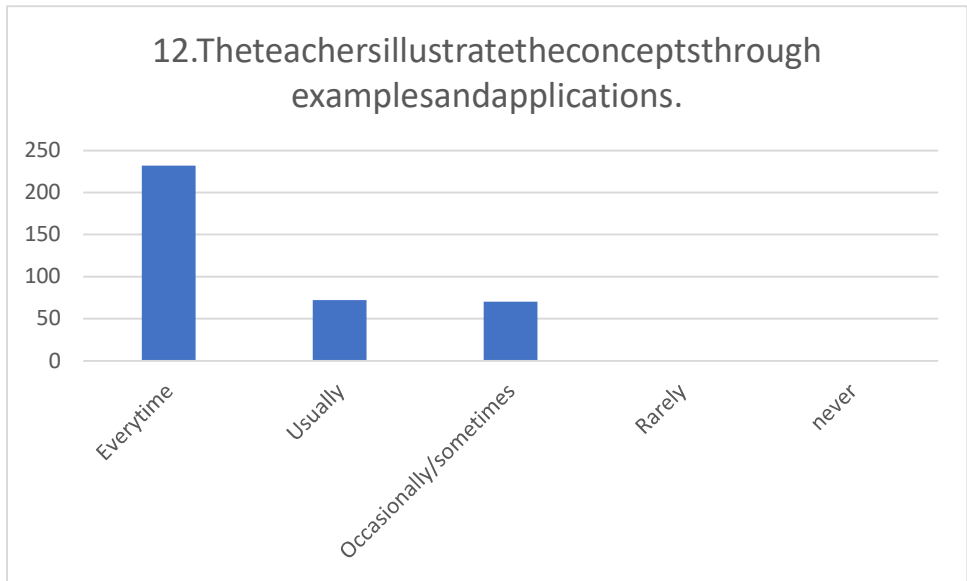


11.yourmentordoesanecessaryfollow-upwithan assignedtasktoyou.	
Everytime	221
Usually	113
Occasionally/sometimes	20

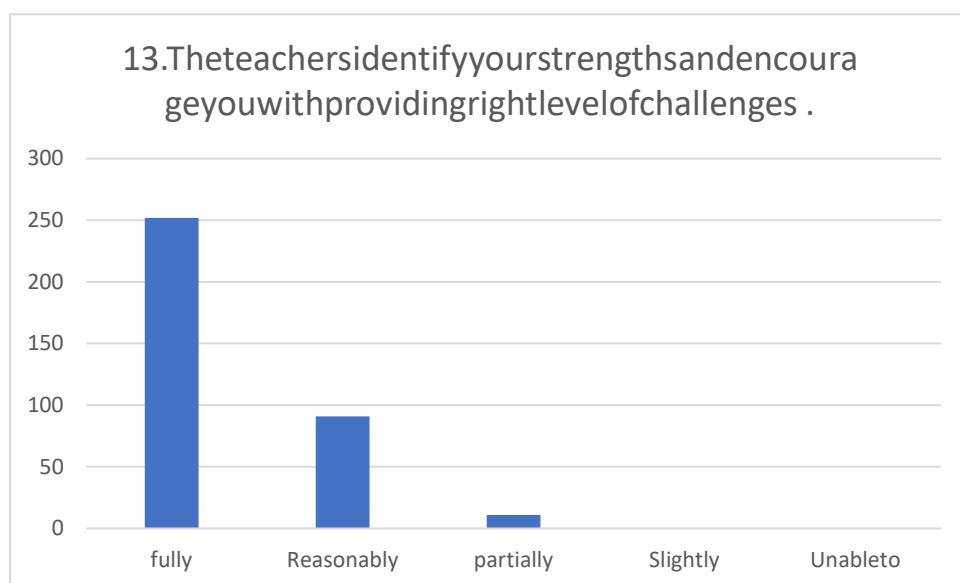
Rarely	
Idon`thaveamentor	



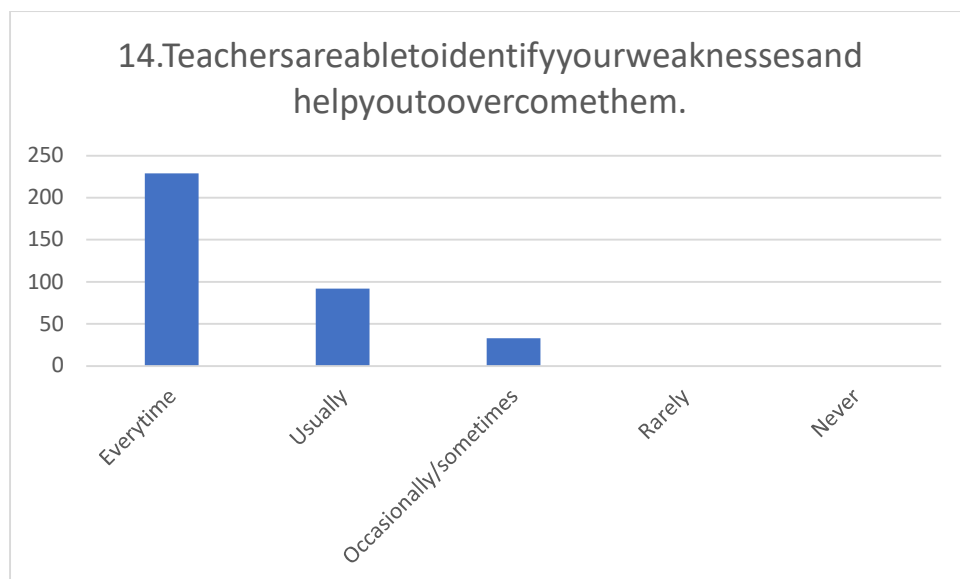
12.The teachers illustrate the concepts through examples and applications.	
Everytime	232
Usually	72
Occasionally/sometimes	70
Rarely	--
never	--



13.The teachers identify your strengths and encourage you with providing right level of challenges .	
fully	252
Reasonably	91
partially	11
Slightly	
Unable to	-

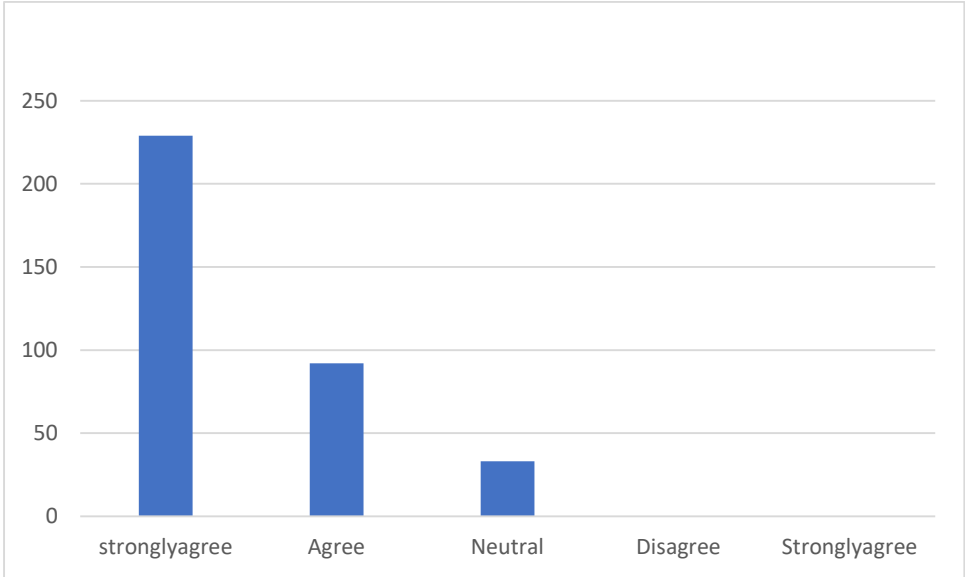


14. Teachers are able to identify your weaknesses and help you to overcome them.	
Everytime	229
Usually	92
Occasionally/sometimes	33
Rarely	-
Never	-

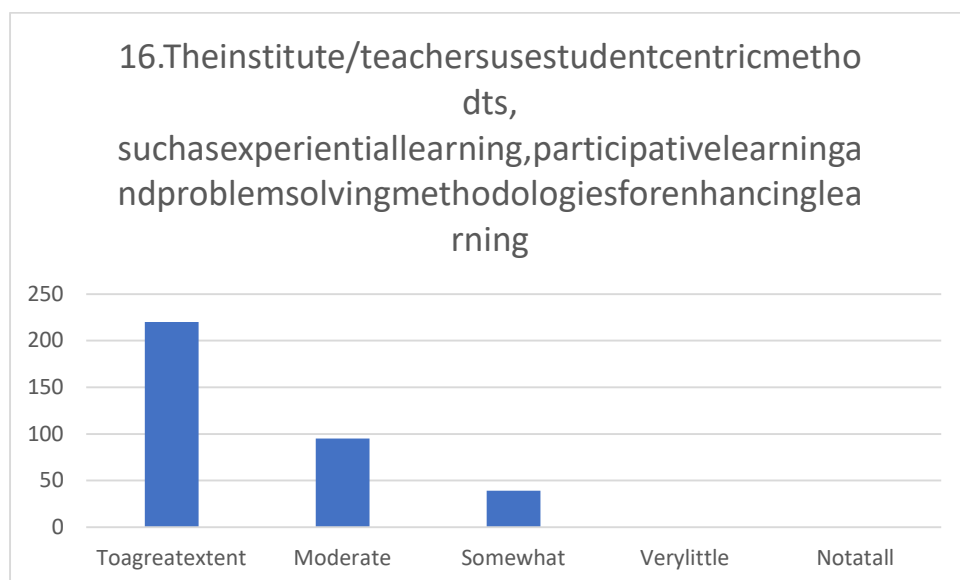


15. The institution makes effort to engage students in the monitoring, review and continuous quality improvement	
strongly agree	229
Agree	92

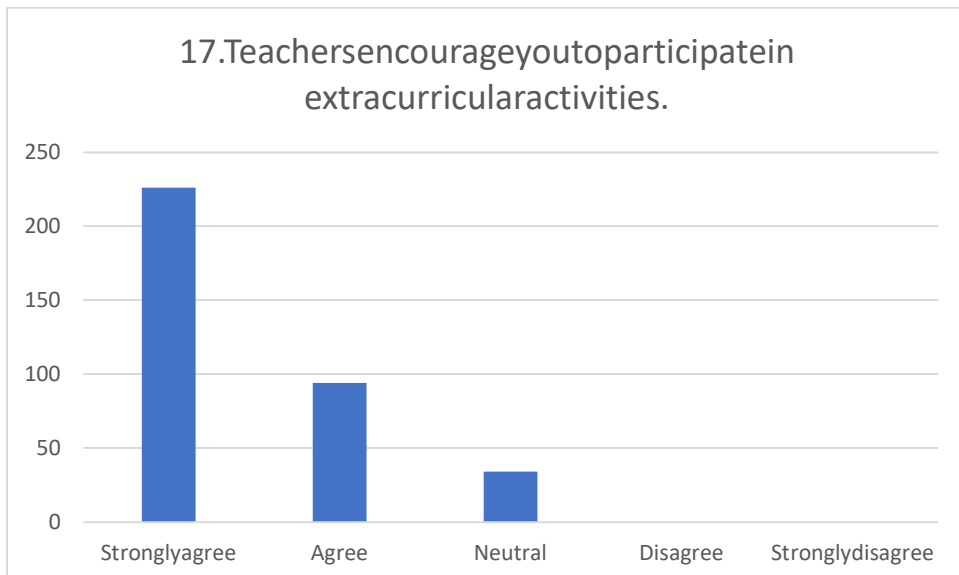
Neutral	33
Disagree	0
Stronglyagree	0



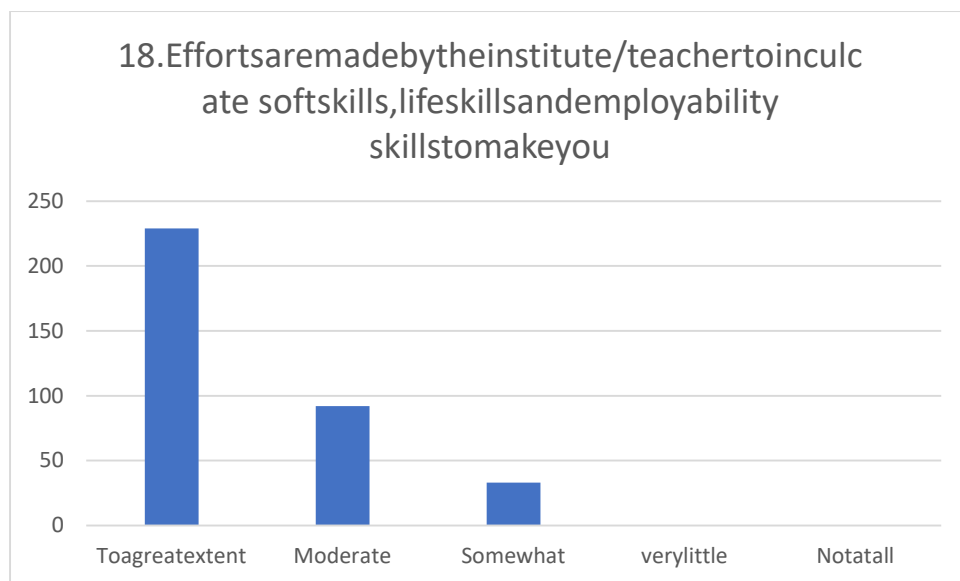
16.The institute/teachers use student centric methods, such as experiential learning, participative learning and problem solving methodologies for enhancing learning	
To a great extent	220
Moderate	95
Somewhat	39
Very little	
Not at all	0



17. Teachers encourage you to participate in extracurricular activities.	
Strongly agree	226
Agree	94
Neutral	34
Disagree	-
Strongly disagree	-

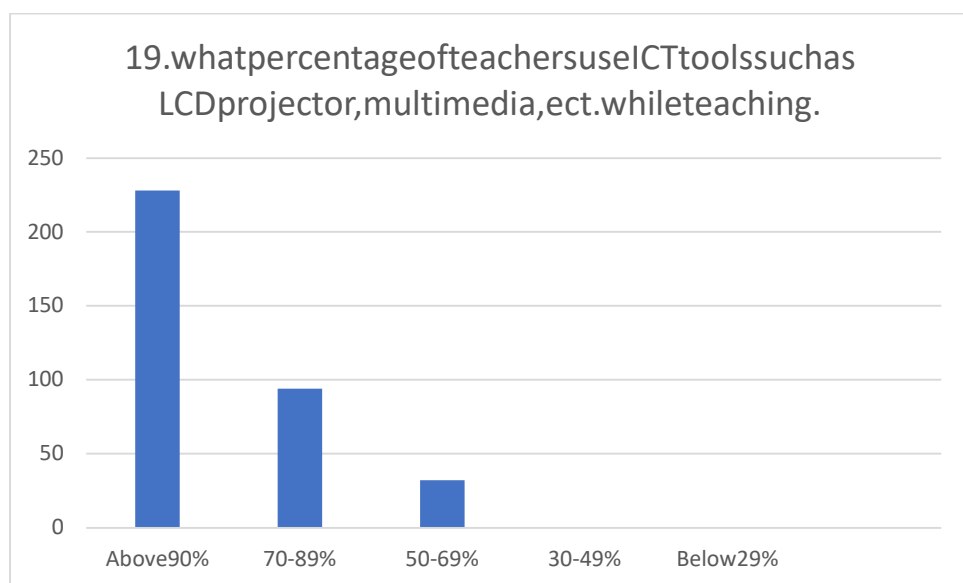


18.Effortsaremadebytheinstitute/teachertoinculcate softskills,lifeskillsandemployability skillstomakeyou	
Toagreatextent	229
Moderate	92
Somewhat	33
verylittle	-
Notatall	-



19. what percentage of teachers use ICT tools such as LCD projector, multimedia, etc. while teaching.	
Above 90%	228
70-89%	94
50-69%	32

30-49%	-
Below29%	-



20.theoverallqualityofteaching-learningprocessin yourinstituteisverygood.

Stronglyagree	225
Agree	93
Neutral	36
Disagree	-
Stronglydisagree	-

